

# The Waldorf Weekly for November 9, 2011

A WEEKLY PUBLICATION  
OF THE WALDORF SCHOOL  
OF PHILADELPHIA

## IN THIS ISSUE

- A Lantern Walk in the Woods
- Local News Station Visits
- Neighborhood News
- Children's Scholarship Fund Lottery Opens
- Holiday Fair News
- Courtesy of the Month
- Kim John Payne Comes to Princeton
- Holiday Fair Pie Order Form

## CALENDAR OF EVENTS

### November

- 10 Observation Morning, 8:30–10:00 a.m.
- 12 Festival of Lanterns, 7 p.m.
- 18 Holiday Fair, 1 p.m. dismissal
- 19 Holiday Fair, 10 a.m.–5 p.m.
- 23 Thanksgiving Recess, 1 p.m. dismissal
- 28 School re-opens

### December

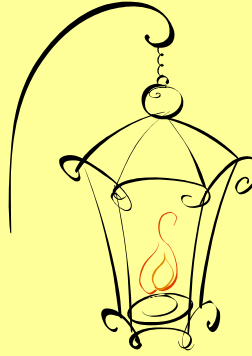
- 1 Observation Morning, 8:30–10:00 a.m.
- 8 Observation Morning, 8:30–10:00 a.m.
- 21-30 Winter Break, **NO SCHOOL**

### January

- 2 Winter Break, **NO SCHOOL**
- 3 School re-opens

## FESTIVALS

### **Festival of Lanterns Moves to the Woods**



This year we welcome the whole school community to join us in this special celebration of carrying light into the darkness of winter. The Lantern Walk has been made all the more special by holding it in our beautiful woods nearby. Bring your lantern and a mug for apple cider. We will take a walk, warm ourselves by a fire, and tell stories.

The Lantern Walk will take place in the Blue Bell Hill section of Fairmount Park on Park Lane Drive on Saturday, November 12th at 7 p.m. Join us!

#### *Directions to Blue Bell Hill from school:*

1. Make a left turn out of the school entrance onto Germantown Avenue. Proceed to the traffic light and make a left turn onto Cresheim Valley Road.
2. Make a right at the first traffic light onto Allens Lane and follow it as it curves onto Wissahickon Avenue.
3. Drive through two traffic lights and proceed 4–5 blocks to Hortter Street; turn right.
4. Make a left onto Park Lane.
5. Veer to the right around Walnut Lane Circle, staying on Park Lane. Entrance to Blue Bell Hill will be on the right.

## Fox 29 News Pays Us a Visit

Intrigued by our school's approach to technology, news anchor Karen Hepp from Fox 29 visited our school last Wednesday. She interviewed teachers, students and parents and visited many of our classrooms. I'm told that Karen's story will be featured on Fox 29's 10.00 p.m. news show in a couple of weeks. We'll keep you posted!

~ Alexandra Borders  
Director of Admissions

## A HOLIDAY FAIR CHECKLIST

- ✓ Buy some raffle tickets for the handmade quilt, and sell some to family and friends.
- ✓ Sign up! Sign up! Sign up! Sign up for a volunteer workshift and plan to have to fun!
- ✓ Craft away! Put on the tea kettle after the kids have gone to bed and create something for the Parent Handwork Table.
- ✓ Tell everyone you know about the Holiday Fair.



## So Noted...

### W E E K L Y P A R E N T S T U D Y

Parent Study meets every Wednesday from 3:30–5 p.m. in the Parents' Resource Room in Eagles I (near the Snowdrop Nursery). Join us in reading together about Waldorf Education, parenting, and other topics of mutual interest. Aftercare services are available to participating parents without charge; however, you must register your child in the school office.

If you have any questions, please feel free to contact me at 215-226-3688. See you after school!

~ Donna DiStefano

**THE WALDORF WEEKLY** is published every Wednesday during the school year for the parents and friends of The Waldorf School of Philadelphia. The next newsletter will be published on **Wednesday, November 16, 2011**

Submissions for the next week are due on **Monday, November 14th at 12 p.m.** Submissions after the deadline will be included at the discretion of the editor.

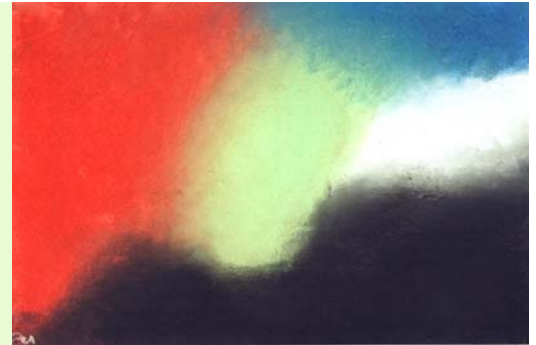
Classified ads are published bi-weekly as a free service to the community. Publication in the classified section is available as space allows. Please send all submissions to [office@phillywaldorf.com](mailto:office@phillywaldorf.com).

**Disclaimer:**

Items and advertisements appearing in this newsletter may be the opinions or beliefs of their contributors, and may not necessarily reflect the policies or ideas of The Waldorf School of Philadelphia.

### The 8th Grade Elves

Every Friday since September, the 8th grade has been felting, winding, snipping, tying, dyeing, folding, knitting, pinning, sanding, and decoupage (we made that word up) to stock the annual 8th grade Holiday Fair table. Please stop by our room at the Fair to see the ornaments, toys, notebooks, plant-dyed yarn kits, indigo-dyed t-shirts, and barrettes we've made. Pick up a pack of greeting card reproductions of our pastel color studies with Ms. Nicola. Bring home a pie we prepared as apprentice bakers to Mrs. McLaughlin. Have your gift wrapped in tissue. And tuck all your purchases into a reusable shopping bag imprinted with our school's new logo. It's all great and all to the good of our 8th grade trips—stop by and ask us about them. Thanks for your support!





### THE FAIRY'S WING

The Fairy's Wing is your school store and a great source for beeswax, crayons, and Waldorf-inspired playthings.

Store hours are :


**Monday– Friday , 8:15–9:30 a.m.,**  
**Wednesday , 12:45–1:30 p.m.**  
**& Wednesday–Friday, 2:45–3:30 p.m.**

**Have you heard about the new circus items in the school store?  
Start your holiday shopping early. Come in and check it out!**



## SIGN UP SHEETS ARE POSTED

Please sign up for a 2–hour Fair work shift on the bulletin board near the building's main entrance. We can't make this Fair Successful without the help of each and every parent in the school! Thanks!






## HOLIDAY FAIR AND CRAFT BAZAAR

November 18 & 19, 2011




Homemade gifts for sale and magical children's activities

# Neighborhood News

## ENCHANTING INSTALLATION AT ART GARAGE

Mt. Airy's own community arts organization, the Mt. Airy Art Garage, has transformed its new space at 11 W. Mt. Airy Avenue into an enchanting nature preserve with an installation of works by one of its founding members, Meei-Ling Ng.

Meei-Ling Ng, known for her bird and nature paintings, brings the same command of her two-dimensional work to a three-dimensional art installation. "Recapturing Memories" shows her love of nature while evoking memories of both her childhood and the present. Using mostly recycled and raw materials, her interactive art installation invites you to participate. Don't miss this bold and unusual approach to the first one-woman show at the Mt. Airy Art Garage. Gallery hours are noon–6 p.m., Thursday through Sunday. The exhibit will close on November 18th.

## HRC HOSTS FAMILY DAY CELEBRATION

The Human Rights Campaign Greater Philadelphia (HRC) presents its first annual Family Day Celebration on Sunday, November 13, 2011, at Plymouth Meeting Friends School, 2150 Butler Pike, Plymouth Meeting. All are welcome: LGBT families, straight allies and prospective families.

The event will offer sponsored resource tables representing adoption agencies, financial advisers, professional photographers, open and affirming religious affiliations, and other community-based LGBT organizations. If you have any questions, please email [hrcphilly-familyday@gmail.com](mailto:hrcphilly-familyday@gmail.com).

## "Race to Nowhere" Screening in Area

"Race to Nowhere", the documentary film made by a mom concerned about the achievement pressure her daughter faced at school, will be screened at Hatboro-Horsham High School on Tuesday evening, November 15th at 7 p.m.

The film generated a lot of discussion in area schools—both public and private—when it premiered last school year. Facilitated discussions often followed the film's screening, and that opportunity is being offered by "Be Part of the Conversation" at Hatboro-Horsham. There is no charge for the event; donations are encouraged. To see what "Race to Nowhere" is about, view the trailer at [www.racetonowhere.com](http://www.racetonowhere.com)

## CHILDREN'S SCHOLARSHIP FUND LOTTERY OPENS

Applications for the 2012 Children's Scholarship Fund will be available beginning on November 15th.

Children's Scholarship Fund Philadelphia (CSFP) offers 4-year scholarships for Philadelphia children in kindergarten through 8th grade using a lottery system. Scholarships are underwritten by a partnership of businesses and private donors to offer parents options in choosing schools. Lottery applications and program guidelines should be available online later this week at [www.csphiladelphia.org](http://www.csphiladelphia.org).

## TEN SECOND ELEVATOR SPEECH

Looking for something to say when you talk to others about our school? Make it short and succinct with a ten-second elevator speech. This week's speech:

*"The Waldorf School of Philadelphia is a proven and enriching alternative to education as usual."*

## MISSED THE CLOTHING EXCHANGE?

Warm winter children's clothing is still available from last weekend's Clothing Exchange. Stop into the Parents' Resource Room to have a look and to find something for the little ones and your grade schoolers. Hurry, though. Items left at week's end will be donated to charity



# The Waldorf School of Philadelphia's HOLIDAY FAIR News



Days until the  
Holiday Fair!

## Committee Chairs and Parent Reps Meet and Plan

Sunday, November 6<sup>th</sup> saw Committee Chairs and Parent Reps meeting for a light supper, a glass of wine, some good conversation and brainstorming as they prepared for the Holiday Fair. Volunteers met at the Fiorella's house to catch up on what's new and what to do for this year's Fair while sharing some "war stories" from Fairs past. Needless to say, there were lots of laughs, but some great ideas and plans were exchanged. Here's some of what they talked about:

**What's new includes locations for children's activities and a second snowflake station.** The Children's Craft Room will be housed in the Applied Arts Room this year, with entry from the school yard rather than the Eagles I hallway (barring torrential rain!). The **Children's Shopping Room** will occupy the Parent Resource Room, and a waiting area will be set up in the hallway for parents. **Beeswax candle dipping is still forming (no joke intended!)** Hopefully, candle dipping will take place in the library. Contact Pat Fiorella if you want to help with this activity. **Lisa Hurwitz and Alex Dilks Pandola are also developing plans for a Face Painting booth** for that wing of the school. Contact Alex to get involved.

**A second snowflake station** will also be set up near the Applied Arts Room where you can pay your \$5 admission charge and have your hand stamped to enter the main building.

**Miss Gwyn announced that the puppet play for this year** will be *Feather Light*, a tale of a small boy, his courage and the power of love. She described the play as really accessible for even the youngest children, so the whole family will enjoy it. Please remember to plan to be early for the shows as entrance will not be permitted once the play has begun. Both children and adults pay one snowflake each for admission. Shows will be in the auditorium at 11 a.m. and 1:30 p.m. Children under 5 **MUST** be accompanied by an adult.

Maggie Davis, the chair of the **Children's Craft Room**, filled us in on the crafts for this year, which will include decorating oranges with cloves, making the lovely sachet squares with lavender and calendula, and creating holiday hanging ornaments from embroidery thread.

Mandy Rogers-Petro announced that the **Holiday Chorus**. Concerts will present concerts at 12:30 p.m. and 2:30 p.m. Admission to the concerts is free. Mandy requests that performers be in appropriate dress. Ideally, your child will be at both performances, but one is better than none! And remember that if your child is singing on Saturday, they have a rehearsal with Mrs. Rogers-Petro at the 1 p.m. dismissal the day before. Following rehearsal, your child should be picked up promptly at 3:15 on Friday, November 18<sup>th</sup>. Take advantage of that time and do your volunteer hours while the kids are busy!!!!!!

Parent Reps will be contacting their class parents to assist with volunteer sign-ups. We all agreed that **volunteering at the Fair** is a wonderful way to support the school AND meet other parents. If you haven't signed up for a two-hour work shift, please do so NOW. By signing up early you will get your first choice on both time and the activity you want to work on.

## Wow, that was great!

All of the fabric squares for the Children's Craft Room are finished! Thanks so much. Another "to do" project that just cropped up is tablecloth-making. We need about 12 more tablecloths to be made. Whipping up a simple tablecloth might be a snap for some of you crafty folk. Use cotton fabric with a festive pattern and simple hem to make a cloth that measures 36" x 36". Please contact Pat Fiorella at [patlittleflower@yahoo.com](mailto:patlittleflower@yahoo.com) to ask questions or to say you'll fill this urgent need.

(Continued on page 5)

### Wow, this will be great!

Kirsten Carangi along with her son, Aries, who is in first grade, have arranged a nice treat for the Fair. They will host special guest Nina Berryman, farm educator from Weavers Way and Henry Got Crops in cider-making outside near the jump rope machine. Nina will bring her new **cider press** and the children can take a turn pressing apples for a taste of cider, **free of charge**.

### FRIDAY NIGHT TALENT AND DINNER TOO!

The line-up for our upcoming wonderful night of music at dinner Friday November 18th is set! Through the efforts of third grade parent Daniel Matsukawa, a clarinetist with the Philadelphia Orchestra, we are lucky to have Orchestra cellist Yumi Kendall playing Bach's cello suites and more. Yumi is an 1999 alumna of the Washington Waldorf School in Bethesda, MD, and is excited to connect with our school community. She'll play from 6 to 7 p.m., along with some favorite musicians from years past plus some new additions. See the schedule below and plan accordingly! **DON'T FORGET: THERE IS NO ADMISSION ON FRIDAY NIGHT, SO INVITE YOUR FRIENDS AND FAMILY TO COME FOR DINNER AND TO ENJOY AMAZING ENTERTAINMENT.**

**Call The  
Babysitter!**

#### Room One: A Little Night Music

6–7 p.m., Yumi Kendall, cellist, Classical

7–8 p.m., Amir Gollan, accordionist, Traditional

8–9 p.m., Patrick de Caumette, guitarist, Jazz/Funk/Blues/Original

#### Room Two: Music Variety with Vocalists

6:30–7 p.m., Colleen Klym, singer/guitarist, Rock and Folk covers

7–8 p.m., David Updike and Janet Benton, guitarist and singer, Folk Rock originals and covers

8–9 p.m., Jason Fifield, Alicia Abrams, and Sam Briger, multi-instrumentalist, violinist, and singer/guitarist

Don't miss out! Line up your babysitter NOW for a fun evening of food, music, and shopping!

~ Pat Fiorella, Holiday Fair Chairperson

**BUY A CHANCE  
TO WIN THIS  
BEAUTIFUL  
QUILT!**



**Get your raffle tickets!** Chances to win this beautiful, handmade quilt by Anna Ziegner are now available on-line at [www.phillywaldorf.com/holiday-fair](http://www.phillywaldorf.com/holiday-fair). This is a great way to share the spirit of The Holiday Fair with your friends and family who cannot join us for the actual event. Chances are 1 for \$5, 5 for \$20 and 20 for \$50, with all the proceeds directly benefiting The Waldorf School of Philadelphia and our scholarship program.

### Parent Handwork Table is still looking for donations!

Don't keep us in suspense. Call or e-mail Nina Letherer today to let her know what you've made!

**More on  
next page!**



## ASK PAT

*If there is a snowflake card purchase table near the Applied Arts Room, how will I show that I paid when I enter the main building? Signed, Planning Ahead*

Dear PA, When you pay your \$5 general admission at the Applied Arts Room, the volunteer parent will stamp your hand. Show your hand stamp to enter the main building. Pat

*Dear Pat, I am the parent of two small children and will never find time alone to work my 2 hours at the Fair. Any suggestions? Signed, Busy Bee*

Dear BB, If your partner can't trade off with you (remember they work too!), then perhaps you and another parent friend can trade child care back and forth. Where there's a will, there's a way! Pat

*Dear Pat, As a parent rep for my class, I am thinking about the email that I want to send out encouraging all the parents to sign up NOW. The sheets look a bit empty. Would it be okay if we signed up to work together in a room? It seems like it would be fun. Signed, Rockin' Rep*

Dear RR, I encourage you to coordinate with your fellow parents and friends to work together. Volunteering is fun and more fun with friends, old and new. Pat

*Dear Pat, I saw you gazing at the sign-up sheets the other day in front of the bulletin board. Is that some meditative exercise? You seemed in a trance. Signed, A Friend*

Dear Friend, You may see me standing trance-like in front of the sign-up sheets most days now. I wouldn't call it meditative; more like catatonic! Are you signed up yet :) ? Pat

## Children's Shopping Room Still Seeks Crafters

Dear Waldorf Families,

Thank you to all of our Children's Shopping Room volunteers! We have continued to make great progress, but we could still use more help!! Join us at Parent Handwork on Friday from 8:30–10:30 a.m., or this Thursday night at 8:00 p.m. at Ilka Cassidy's house for crafting, food, and conversation.

Thanks for your donations of fabric and sock yarn!! We still need donations of:

- Whole walnuts (lots of them)
- Bees wax

For more information, contact Ania Mazurkiewicz-Munoz, Co-Chair, Children's Shopping Room, at (570) 239-2777.

Hope to see you soon!!



### SOCIAL INCLUSION CORNER

## COURTESY OF THE MONTH

Patience becomes understanding. -Rudolf Steiner

Patience is the greatest of all virtues.

~ Cato the Elder, Roman orator and politician

*The Social Inclusion is an on-going project designed to bring greater awareness to issues of social inclusion, courtesy and bullying in our school. Our school participates in, and supports, The Social Inclusion with the goal of creating a healthy social environment that nurtures children and adults, encourages open discussion, and provides ways of resolving disagreements and conflict that are beneficial to the school community.*

## AN IMPORTANT HOLIDAY FAIR REMINDER CONCERNING AFTERCARE

School will close at 1 p.m. on Friday, November 18th so that the classrooms can be prepared for the Fair, which opens at 6 p.m. To help us in our preparations during those frantic 5 hours, please pick up your child promptly at 1:00 p.m.

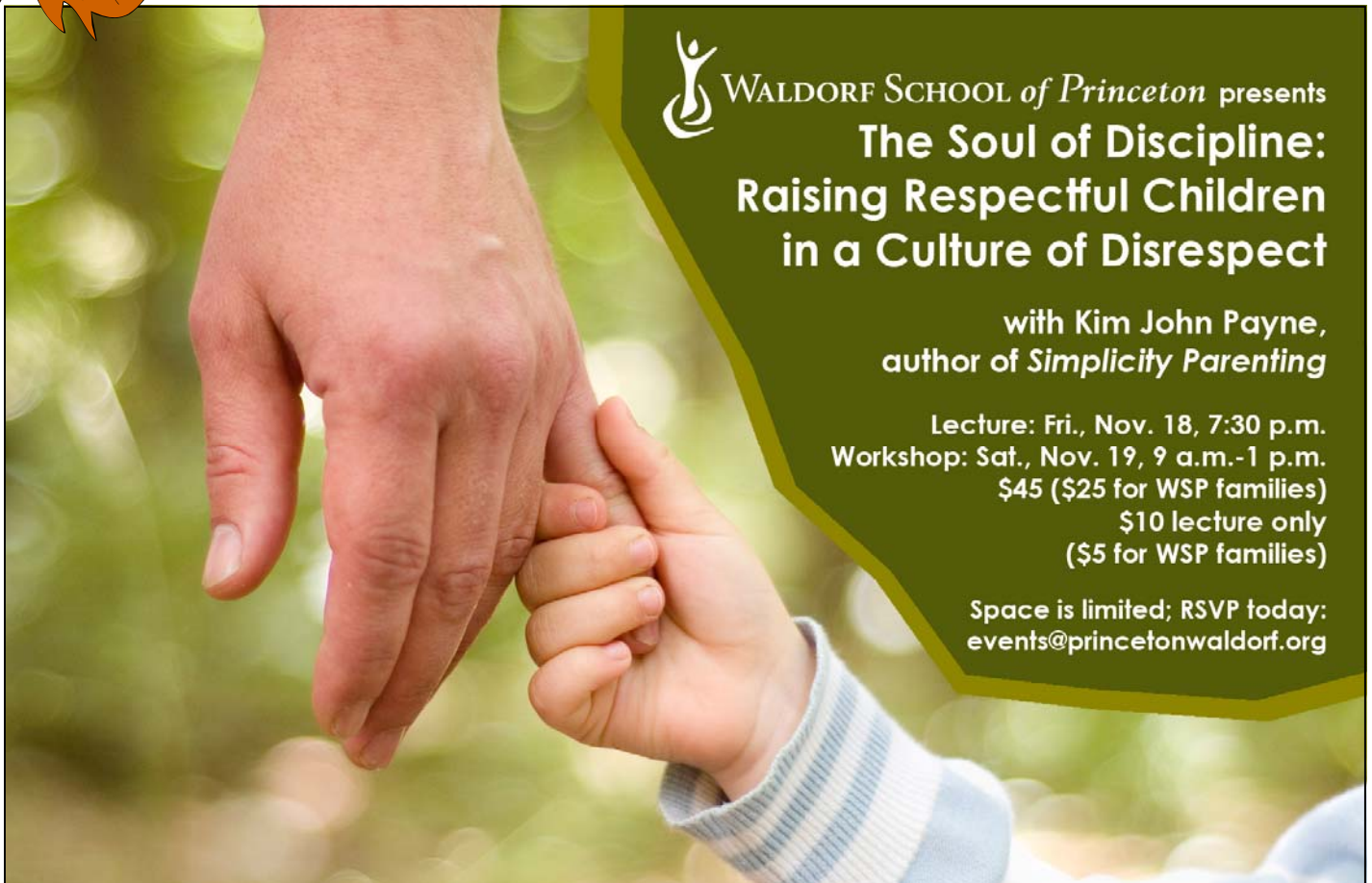
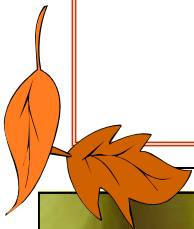
### Special Aftercare arrangements are available for those of you who...


...leave your children in Aftercare on a regular basis on Friday afternoons. If this is the case, you will be able to pick up your children at your usual time, OR

... are a volunteer who is helping with set-up on Friday afternoon. If this is the case, Aftercare will be available to you at no charge for your kindergarten through 3rd grade child. **YOU MUST CONTACT THE SCHOOL OFFICE AT (215) 248-1662 NO LATER THAN 3:30 P.M., WEDNESDAY, NOVEMBER 16TH TO LET US KNOW THAT YOU WILL NEED THIS SERVICE.**

Children in 4th grade and up who are participating in the Holiday Chorus will be in the care of Mandy Rogers-Petro, and will have rehearsal until 3:15 p.m. If you are helping with set-up, your child is in 4th grade and up and **NOT** participating in the Holiday Chorus, please try your best to arrange a play date for him or her, or plan to have her help you.

**SORRY, WE ARE NOT ABLE TO ACCOMMODATE DROP-IN REQUESTS FOR AFTERCARE ON FRIDAY, NOVEMBER 18TH. Thank you for understanding.**



 WALDORF SCHOOL of Princeton presents  
**The Soul of Discipline:  
Raising Respectful Children  
in a Culture of Disrespect**

with Kim John Payne,  
author of *Simplicity Parenting*

Lecture: Fri., Nov. 18, 7:30 p.m.  
Workshop: Sat., Nov. 19, 9 a.m.-1 p.m.  
\$45 (\$25 for WSP families)  
\$10 lecture only  
(\$5 for WSP families)

Space is limited; RSVP today:  
[events@princetonwaldorf.org](mailto:events@princetonwaldorf.org)



7500 Germantown Avenue  
Eagles II Building  
Philadelphia, PA 19119  
[phillywaldorf.com](http://phillywaldorf.com)  
T: 215-248-1662  
F: 215-248-6167  
E: [info@phillywaldorf.com](mailto:info@phillywaldorf.com)

# Reserve your holiday pie!!!

The 8<sup>th</sup> grade is teaming up with expert pie baker Leslie McLaughlin and making pumpkin pies and apple pies for pick-up at the Holiday Fair.

Use this form to reserve your pie(s) at \$25 each. Place your order form and deposit in the collection envelope outside the 8<sup>th</sup> grade classroom. And THANKS from the Class of 2012!

Name & e-mail: \_\_\_\_\_

How many? \_\_\_\_\_ apple \_\_\_\_\_ pumpkin

Please include deposit of \$10 per pie. Make check payable to *WSP Class of 2012*.

